



---

## **Installation and User Guide**

**fring version 1.02**

**For Nokia Linux edition (N810)**

---

# Table of Contents

---

Introduction .....	1
System Requirements .....	2
Installation Guide .....	3
Downloading fring .....	3
Installing fring.....	6
Registering to fring .....	7
Selecting your fring nickname and password .....	8
Adding Your communities – (optional) .....	9
Adding a SIP Service – (optional).....	11
Using Twitter .....	12
Adding Twitter to fring .....	12
Using Twitter with fring.....	13
Making a SIP Call .....	14
Making your first fring call.....	15
Using fring.....	16
Getting Started .....	16
Your fring contact list .....	16
Statuses.....	16
Call quality .....	17
Opening fring.....	17
Minimized view.....	17
Making a SkypeOut call from fring .....	18
Receiving a fring call .....	18
Chatting.....	18
Chatting with a contact.....	19
Navigating between chats .....	19
Ending a chat .....	19
Viewing offline chat messages .....	19
Adding a new contact .....	19
Adding or Signing In to a community.....	19
Uninstalling fring .....	20
Troubleshooting.....	21
Frequently Asked Questions .....	22
Downloading & Installing fring .....	22
Registering to fring .....	22
General .....	23

---

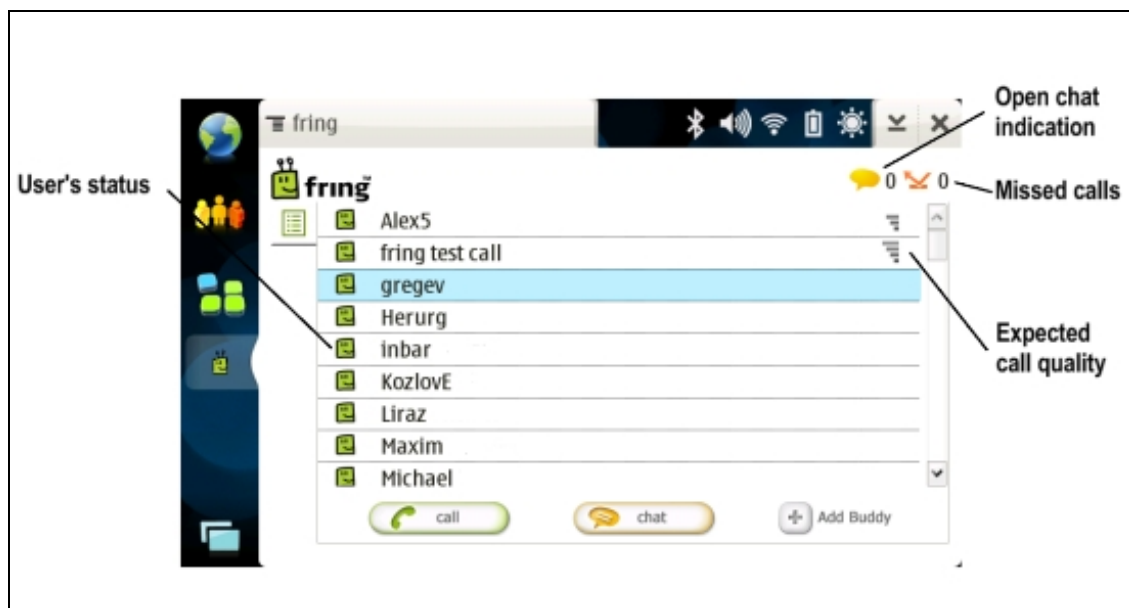
# Introduction

---

## About fring

fring™ is a mobile internet service & community that enables you to access & interact with your social networks on-the-go, including make free calls, live chat and seeing your contacts online presence with all your fring, Skype®, MSN® Messenger, Google Talk™, ICQ, SIP, Twitter, Yahoo!™ and AIM®\* friends using your handset's internet connection rather than costly cellular airtime minutes.

Once you've installed fring, fring's main screen displays your contacts and their presence status (e.g. online, offline). This list shows the names of your fringster-friends, your Skype/Google-Talk/MSN/ICQ/Yahoo/AIM contacts.



From the main contact list you can navigate between your contacts, find their **presence** status and initiate a **communication session** with them. You may initiate a **voice call**, start a **chat session** and move between all open sessions. You can also make **SkypeOut/SIP calls** directly from your fring contact list.

To sum it up, you'll not only make your internet tablet **more useful**, you can also **save money**.

This guide will help you get started.

---

# System Requirements

---

## System requirements

In order to use our Beta version, you will need:

- A Nokia N810 handset
- Internet connection (Not a WAP connection) on your internet tablet.

**Notes:**

To initiate a call to a landline (or non-Skype user) using fring, make sure to purchase SkypeOut/SIP credits.

---

# Installation Guide

---

## Downloading fring

Open <http://www.fring.com/linux> in your handset's browser.



Figure 1 – download file

Click the **OK** option

If the next screen appears, click **OK**

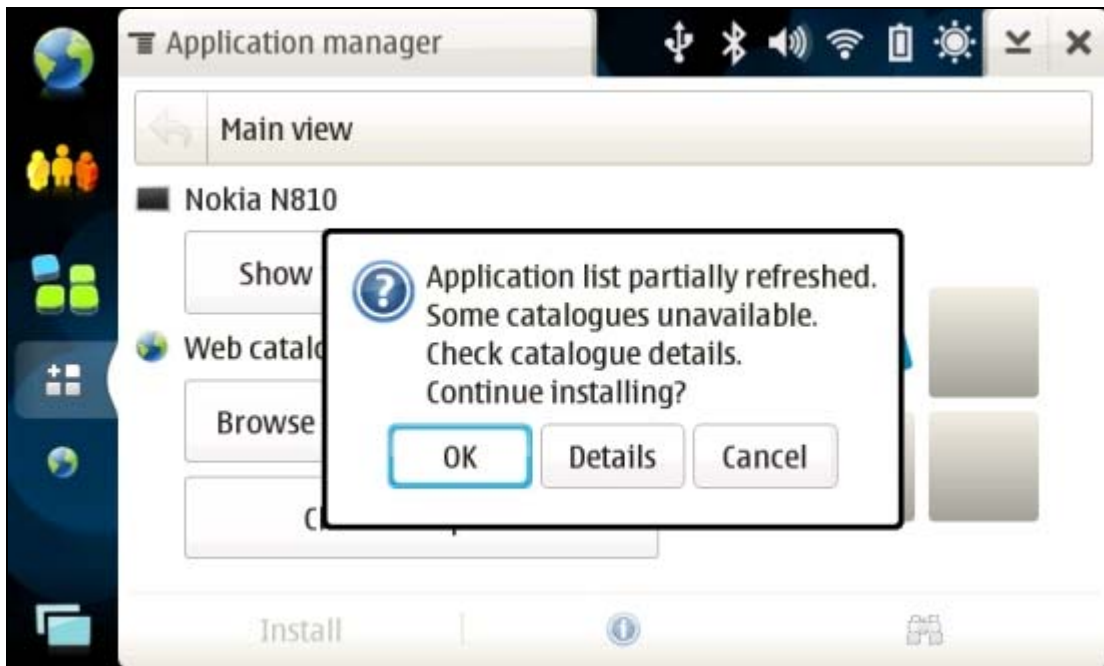


Figure 2 – Downloading

The following screen appears:

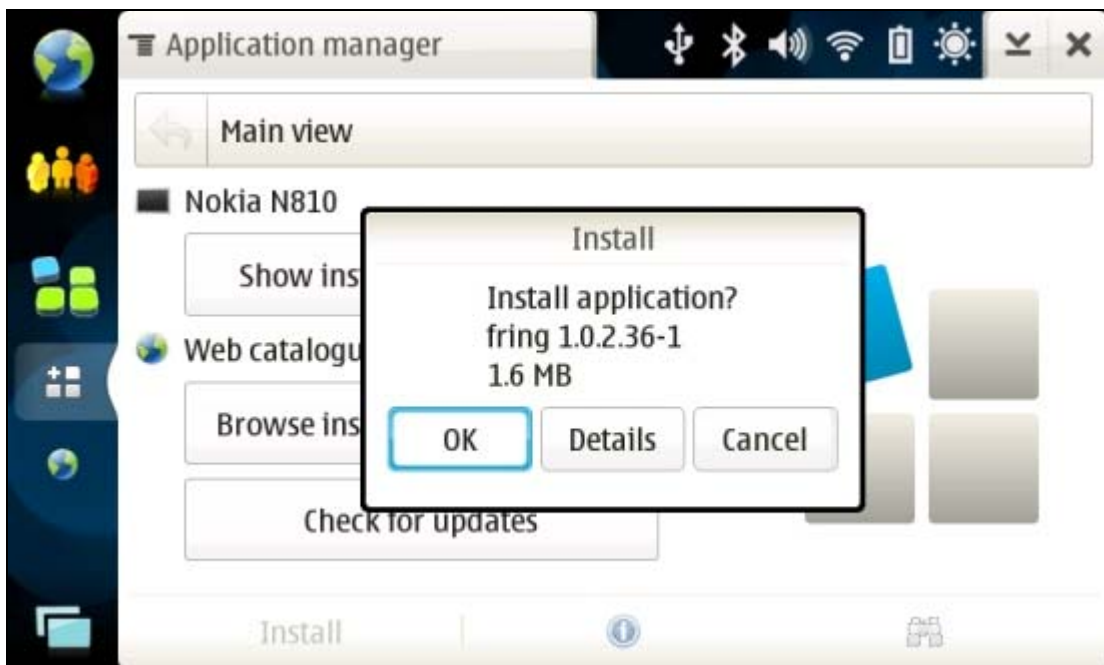


Figure 3 - Downloading

1. Click **OK** to install fring

Within a few seconds, the handset accesses the website. fring is downloaded to your handset and you are ready to begin the installation process.

**Note:** This process may take a few seconds.

Once you have finished the installation, the following screen appears and you are ready to start using fring.

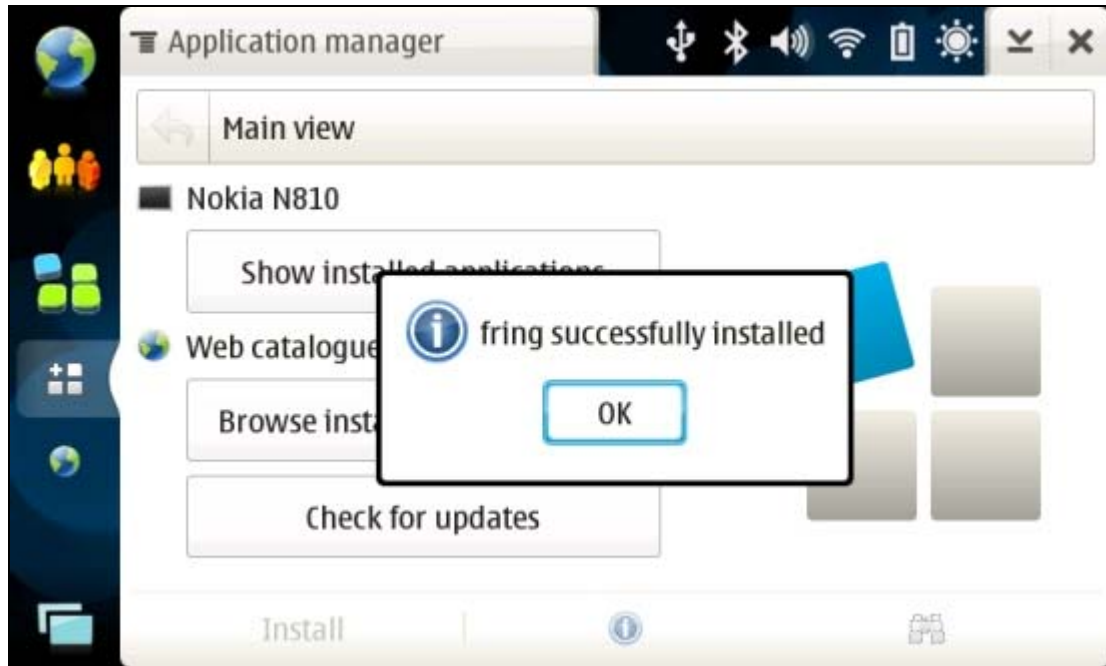


Figure 4 – Installing

# Installing fring

Before you can use fring, it needs to be installed on your handset. (For information about downloading fring, see the previous section in this guide.)

Once you have completed downloading fring, the following screen opens:

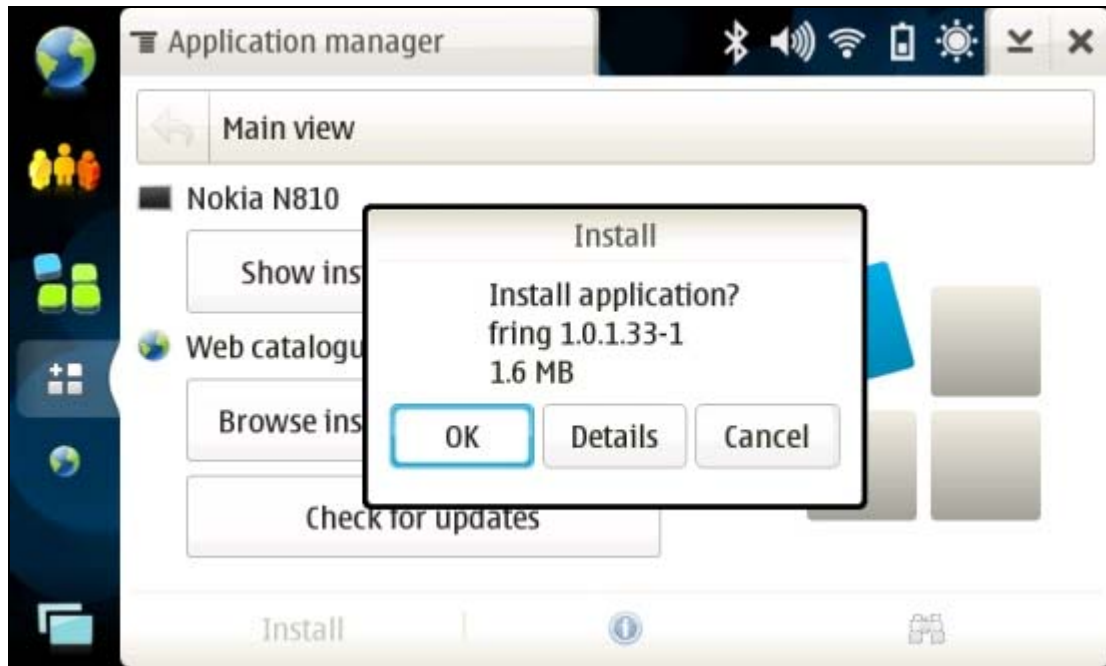


Figure 5 - Begin Installation

1. Press **OK**

The following screen opens:

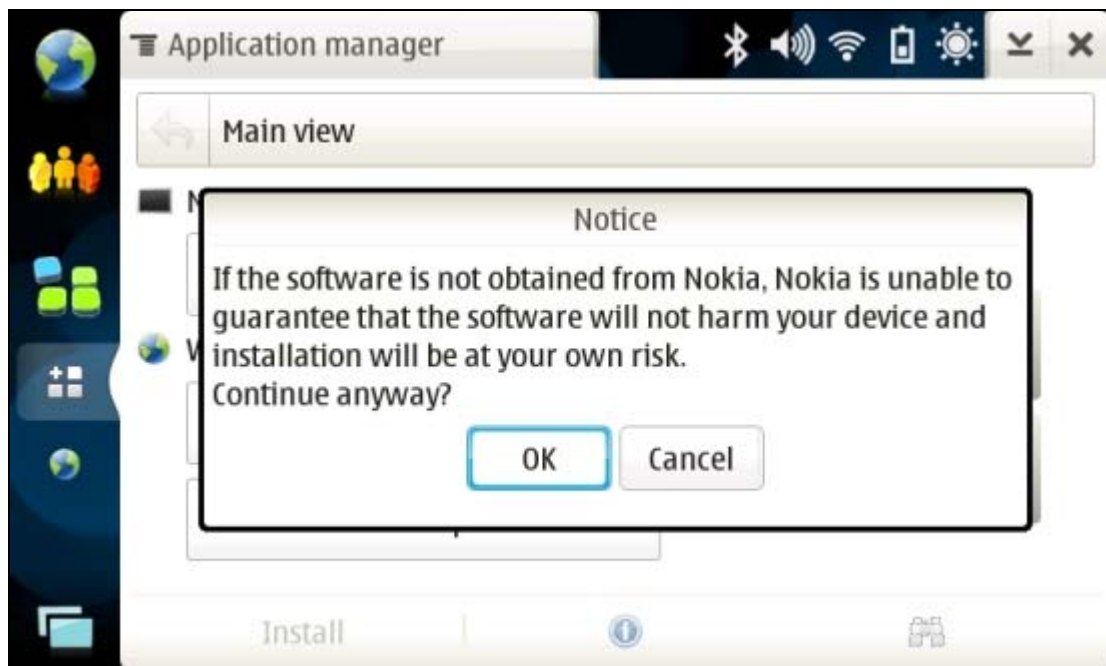


Figure 6 – Application Details

2. Press **OK**
3. The following screen opens:

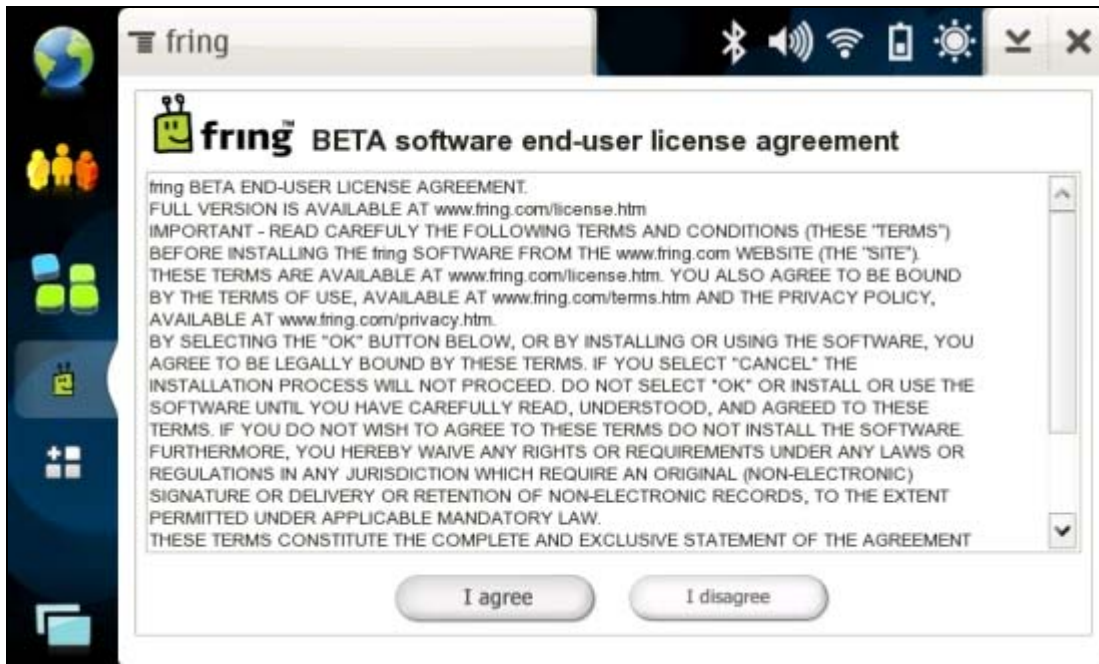


Figure 7 – End User License Agreement (EULA)

4. Before you can begin working with fring, read and accept the EULA.
  - **To read and accept the EULA:**
    1. Use the down arrow to scroll through the EULA.
    2. Once you have read the EULA and agreed to the terms, press '**I Agree**'
    3. The full EULA is available on our website at [www.fring.com/license.htm](http://www.fring.com/license.htm)

## Registering to fring

A short registration process is required before you can begin to use fring.

The stages of this process are:

- Nickname and Password Selection
- Service Definition

## Selecting your fring nickname and password

Once the installation is complete, an **Installation Complete** message appears briefly. You are now ready to select your fring nickname and password.



Figure 8 - Registration Screen

The registration screen allows you to select your nickname and the password you will use to access your fring account. Your fring nickname will help your friends find you easily. A password is required to secure your account and to protect your fring contact list.

➤ **To select your nickname:**

1. Use the keys on your internet tablet to choose the nickname you want to use.
2. Use the down arrow on your handset to navigate to the next field.

➤ **To select your password:**

1. Use the keys on your handset to choose the password you want to use.  
**Note:** Passwords must be at least 4 characters.
2. Press **Login** to move to the next screen. The next screen allows you to add your VoIP (e.g., Skype/MSN/ICQ etc) account details.

## Adding Your communities – (optional)

Once you have chosen your fring nickname and password, provide the details of your communities (e.g., Skype, MSN Messenger, Gtalk, ICQ etc) so that you can begin making and receiving VoIP calls.

**Note:** You can add one or more communities (e.g., Skype) to which you are registered. Make sure to have your username and password for each.

If you do not already have a VoIP account, register on the Web before you begin to add networks. You can add a VoIP service at any time. To add a community now, follow the instructions below.

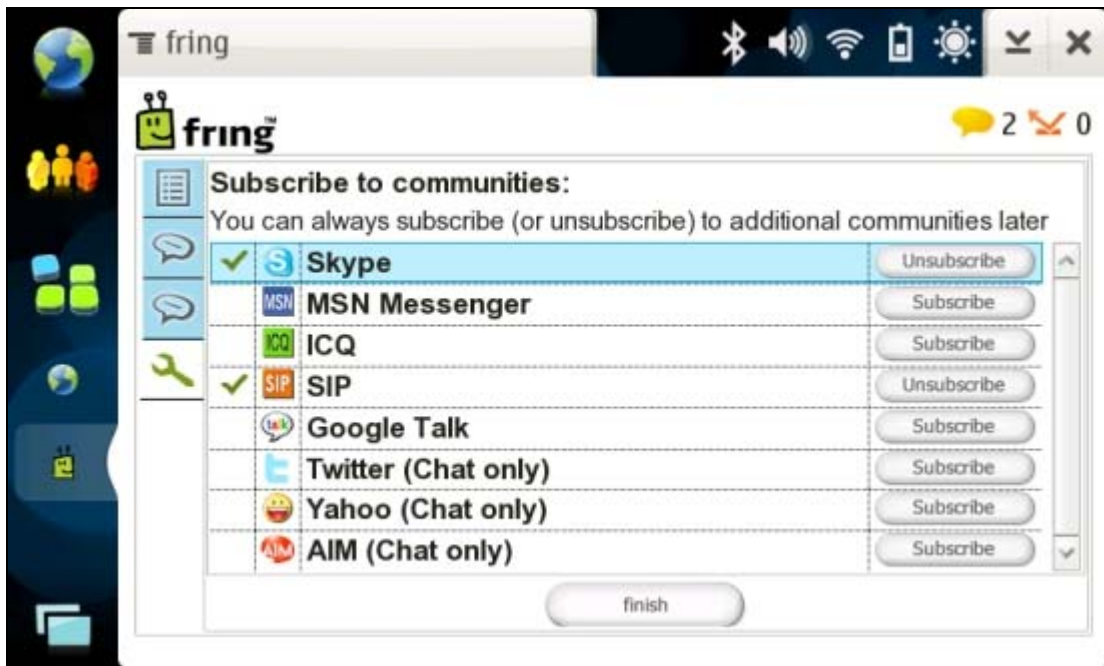


Figure 9 - Define a community - 1

➤ **To login to a community:**

1. Navigate between the options using the up and down arrows on your handset. Choose the service from the list and press the joystick in.

The following screen appears:

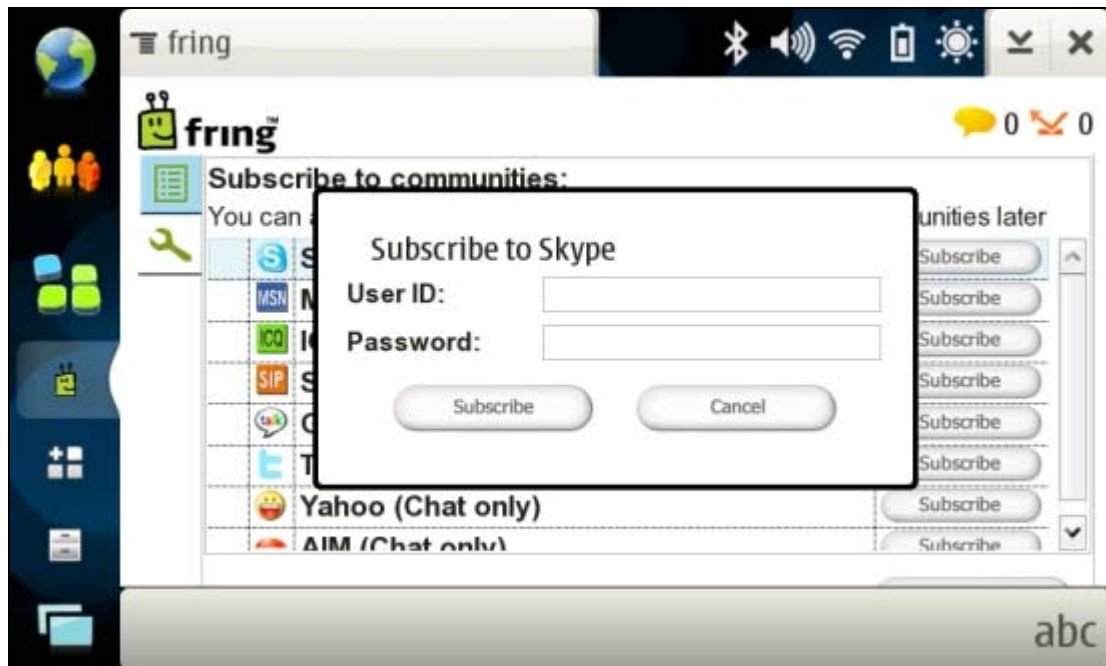


Figure 10 - Define VoIP Service – 2

2. In the **User ID** field, type the username of the service you have selected (e.g., your Skype username). Navigate to the **Password** field using the down arrow on your handset.
3. In the **Password** field, type the password of the community you have selected (e.g., your Skype password).
4. Press **Subscribe** using your left soft key.

The VoIP selection screen appears.

If you are interested in adding an additional VoIP service, repeat steps 1 to 4 in this section.

If you have completed selecting VoIP services, press **Close**

5. Once the sign-in is complete, the contact list of your fring contacts, selected VoIP service(s) contacts and the handset's contact list appears.

**Note:** If you have added more than one VoIP service, the contact list will display contacts from all services in a single list.

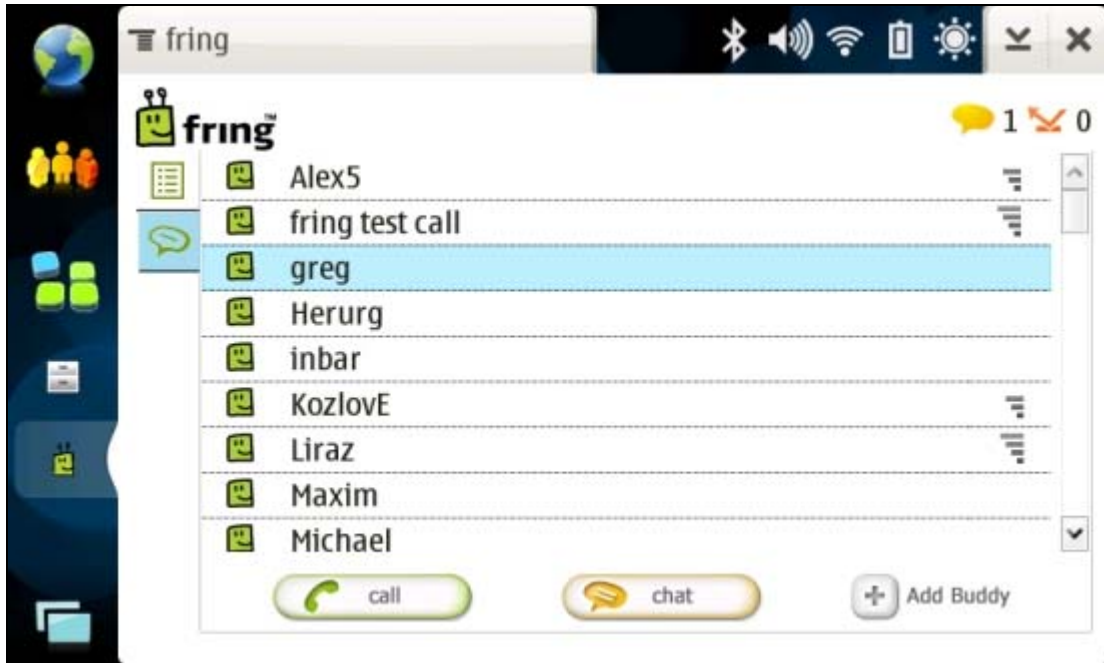


Figure 11 – Contact List

You have successfully completed the registration. You are now ready to make your first call.

## Adding a SIP Service – (optional)

If you have an account with a SIP provider, you can also use it on fring.

➤ To add a SIP service:



Figure 12 - Service Selection

1. Navigate between the options using the up and down arrows on your handset. Choose **SIP** from the list (press your joystick in to select items in the list) and press **Subscribe**.

The following screen appears:



Figure 13 – Select SIP Service

2. Choose your SIP provider from the 'Proxy provider' list. If your SIP provider is not listed, choose **Other**.
3. Enter your SIP user id and password and press **Subscribe**.  
You are logged into your SIP Service and should now be able to make outgoing calls through your SIP provider.

## Using Twitter

If you have already opened a Twitter account (see [www.twitter.com](http://www.twitter.com)), you can use it with fring.

### Adding Twitter to fring

You can add Twitter to fring in the same way that you add a VoIP Service

➤ **To add Twitter or to sign-in as a different user:**

4. Press **Menu** and choose **Settings**.
5. From the submenu choose **Services**  
A screen opens displaying the available options.



Figure 14 – Available services

6. Check the checkbox beside the **Twitter** option.  
A screen opens allowing you to enter your Username and Password.
7. Enter your Username and Password and press **Ok**.  
You are signed into Twitter and Twitter appears as a contact in your fring contacts.

## Using Twitter with fring

Once you have signed into Twitter, you can send Twitter messages directly from your fring contact list.

### ➤ To send a Twitter message

8. Locate the Twitter contact in your fring contact list
9. Choose **Chat**.
10. Type your Twitter message and press **Send**.  
Your message is sent.

# Making a SIP Call

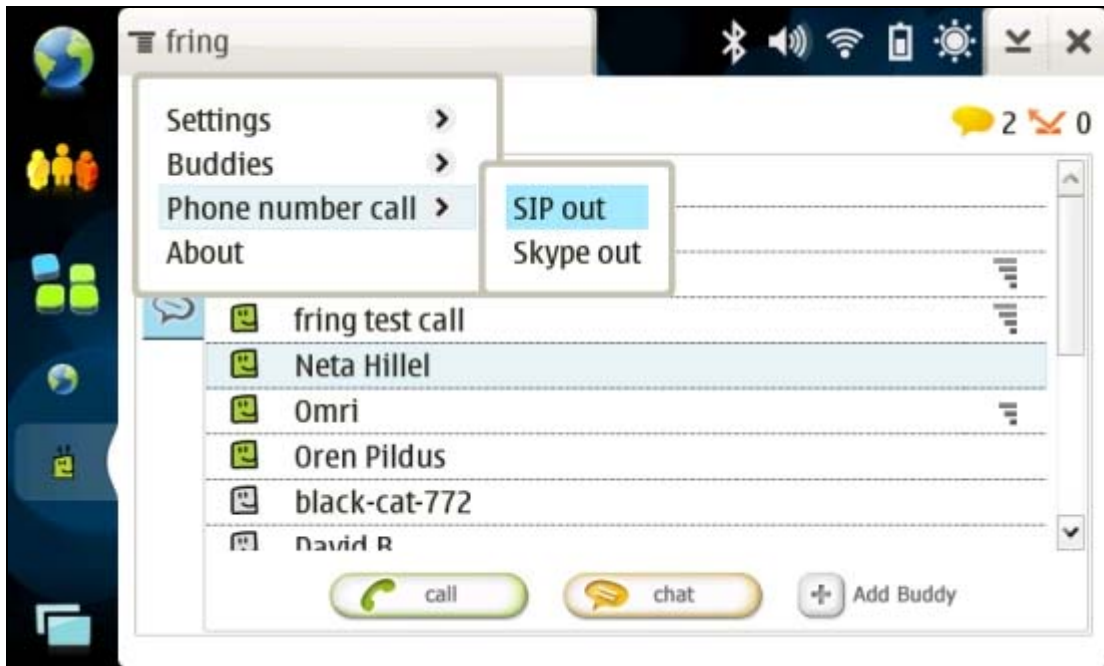


Figure 15 - Call Options Menu

➤ **To make a SIP call:**

1. Open the fring main menu and press **Phone number call**
2. From the Call submenu, choose **SIP out**.
3. Type in the number you wish to call (in its international format) and click **Call**.

Your call is made using the SIP account you have added.

**Note:** Currently, you can only add one SIP account to fring.

# Making your first fring call

Once you have completed the installation and registration processes described above, you're ready to make your first call. To know that everything is working correctly, you may choose to call the **fring test call**.

The fring Echo is a test center that lets you record a message and plays it back to you. If you successfully record and hear the message that you have recorded, you're ready to go!

➤ **To call the fring Echo:**

1. From your contact list choose the **fring test call** contact and press the **Call** button.

The call connects to the test center.

2. Listen to the message and follow the instructions.

Your testing is complete!

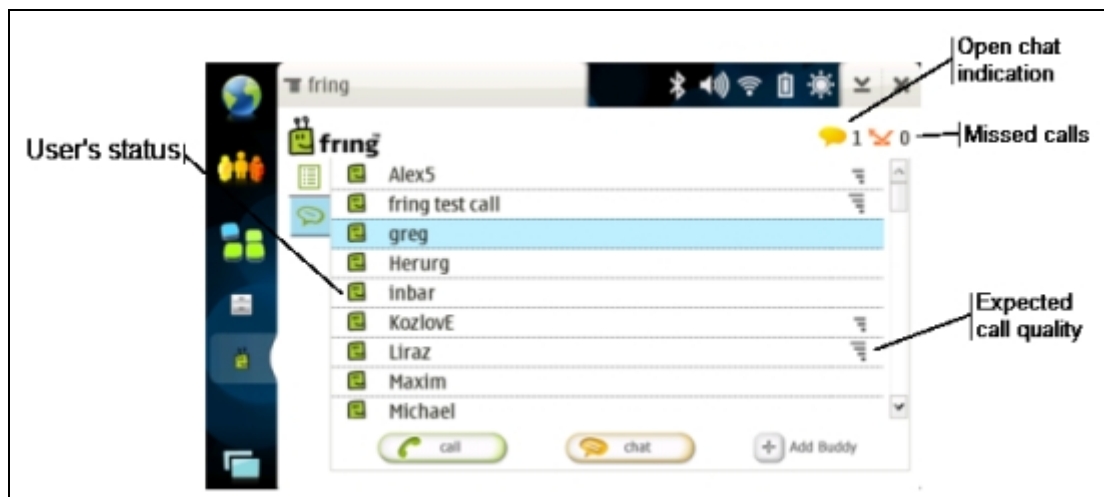
---

# Using fring

---

## Getting Started

### Your fring contact list



## Statuses

The following statuses are displayed in the contact list:

	On a call
	Available / Online
	Busy
	Offline

## Call quality

The call quality icon appears at the far right of each fring contact who is currently online. It describes the **expected call quality** between two parties who are connected to fring, based on the connections the parties have (e.g., 3G, GPRS or WiFi).

**Note:** this icon appears only when your contact is a member of fring.

## Opening fring

If you have installed and registered fring, the shortcut will appear in your handset's **Main Menu**

➤ **To open fring:**

Locate the fring shortcut in the **Application Menu** and click on it.

fring opens and is ready for use.

## Minimized view

fring is minimized while you are using your internet tablet for something else (e.g., calculator).

➤ **To minimize fring:**

Press the **minimize** button at the top right end of the screen.

➤ **To maximize fring:**

A shortcut to fring should be located on the left side of your desktop.

## Making a SkypeOut call from fring

➤ **To make a Skype Out call:**

3. Open the fring main menu and press **Phone number call**
4. From the Call submenu, choose **Skype out**.
5. Type in the number you wish to call (in its international format) and click **Call**.

Your call is made using the Skype account you have added.

**Note:** To make a SkypeOut call from fring, you must have sufficient SkypeOut credits. SkypeOut credits cannot be purchased from fring, only directly from [www.skype.com](http://www.skype.com).

## Receiving a fring call

fring allows you to both make and receive calls using voice-over-IP (VoIP) technology.

➤ **To receive a fring call**

A call screen appears including the nickname of the caller.

Press **accept**

## Chatting

fring lets you chat with your contacts using instant messaging. You can chat with one or more of your contacts simultaneously.



Figure 16 – Installing

## Chatting with a contact

### ➤ To initiate a chat:

1. From your contact list, select the contact you want to chat with and press **Chat**
2. In the text entry area, write your message and press **Send**

## Navigating between chats

If you choose to have two or more chats simultaneously, each will have a separate tab. Navigate between the chats using your stylus.

## Ending a chat

### ➤ To end a chat:

Press the **Close chat** button.

## Viewing offline chat messages

Chat messages can be received even when you are offline. If you have received a message, it will appear as an additional tab when you open fring. If you have received messages from more than one user, a tab opens for each user, displaying the messages they sent.

## Adding a new contact

You can search for a contact who has already registered with fring and add her or him to your contact list.

### ➤ To search for a fring contact in the fring network:

1. From the contact list menu choose **Buddies**
2. Choose the **Add** option.
3. You can now enter the phone number of the person you wish to add (including the int. prefix) and click **add**.

## Adding or Signing In to a community

You can add a new VoIP Service or sign-in as a different user at any time.

### ➤ To add a new community or to sign-in as a different user:

1. From the Options menu choose **Settings**.

The following menu opens:



Figure 17 - Settings Menu

2. Choose **Services**  
A screen opens displaying the available communities.
3. Follow the process defined in the 'Adding Your communities – (optional) section in this guide.

## Uninstalling fring

### ➤ To uninstall fring:

1. From the main menu on your handset, choose **Application manager**.
2. Click the **Show installed applications** option.  
A list displaying the applications currently installed on your handset opens.
3. Navigate to **fring** and press **Uninstall**
4. The fring client is removed from your handset.

---

# Troubleshooting

---

**I get a message saying "Memory Full".**

If your memory is full, clear some space by erasing files (e.g., applications, music files). Once there is sufficient available space, try downloading again.

**I forgot my password.**

Please go to <http://www.fring.com/password>

---

## Frequently Asked Questions

---

### Downloading & Installing fring

#### **How do I download fring?**

fring can be downloaded from the fring website ([www.fring.com](http://www.fring.com)) or fring WAP site ([wap.fring.com](http://wap.fring.com)).

For detailed information about downloading fring, see the Downloading fring section in this guide.

#### **Is fring free?**

Yes. fring's service is free. Your cost for using fring is the standard data tariff for air time it takes to download and use fring.

When using fring over 3G data networks, please be aware that you will be subject to the data usage costs that your service provider charges. If you are using an unlimited 3G data plan you can talk as much as you like for free. Using **fring over WiFi** benefits you with superior voice quality and reduced latency - completely free of charge

As a guideline for calculating your data charges when using fring, assume that fring requires 1MB of data per 15 minutes of talk time.

### Registering to fring

#### **How do I register?**

See the

Registering to fring section in this guide.

#### **Can I use more than one user-id on my handset?**

No, each handset is limited to a single user-id.

#### **Can I add more than one Skype account to my fring account?**

No, each fring account is limited to a single Skype account.

#### **I bought a new handset; can I use the same user-id and password?**

Yes. Download the application again and install it on your new handset. Enter the same fring nickname and password you used with the old handset. Make sure to download the correct version for your handset.

**I bought a new handset and I have a new phone number (SIM card). I would like to use my fring account on my new phone. Can I do that?**

Currently this option is not available. Please [contact our support team](#) and they will help you out. Alternatively, you can download fring again, register yourself with a new user-id and add your old contacts back using fring's search application

## General

**Can I add contacts from other messaging services like Jabber?**

Not at this time. This option will be available in a future version.

**How do I search for other contacts?**

You can search through your contact list to find contacts quickly.

➤ **To search your contact list:**

Start typing the name of your contact.

The list is filtered according to the characters you have typed.

**How do I add new contacts to my fring list?**

See the **Error! Reference source not found.** section in this guide.

**Does fring have any effect on my handset's battery?**

Unfortunately, yes. fring uses wireless data on your mobile phone and therefore tends to consume extra battery power. The actual usage depends on the length of the call and special requirements imposed by your specific network.

**I forgot my password.**

Please go to <http://www.fring.com/password>

**Thank you for becoming a fringster**

We welcome your [comments and suggestions](#) and hope you enjoy fring!